

facades*+*

THE PREMIER CONFERENCE ON HIGH-PERFORMANCE BUILDING ENCLOSURES

PRESENTED BY

THE
ARCHITECT'S
NEWSPAPER

Vitro
Architectural Glass

PPG Formerly PPG Glass

2018 CONFERENCE CHAIR

YKK
ap Quality
inspires

APRIL 19+20, 2018

facadesplus.com
@facadesplus #facadesplus

A MESSAGE FROM THE FACADES+ DIRECTOR

Welcome to Facades+ New York! The Architect's Newspaper is pleased to welcome new attendees and longtime supporters as we return for the seventh year of this dynamic dialogue.

Facades+ New York brings together top professionals from the worlds of design, fabrication, and construction to consider how high-performance envelopes contribute to New York's distinctive character and address the city's growing needs.

We'd like to extend our thanks to conference co-chair Andrew Whalley, Grimshaw, and his team, who have helped curate a unique program of innovators from a variety of fields. You'll have the opportunity to connect with the presenters and your peers during networking breaks in the Methods+Materials Gallery. We urge you to get to know these industry-leading sponsors and find out how they are shaping the future of building facade technology.

Thursday's Symposium on April 19 features keynote addresses by internationally renowned architects Francine Houben and Ian Ritchie. In addition, you'll be treated to a wide selection of panel discussions, with topics ranging from entertainment complexes to ETFE to preparing facades for future climate scenarios to the development of Hudson Yards. On Friday, April 20, we'll delve into hands-on labs and deep-dive workshops with expert practitioners from across the industry.

We're also proud to announce the launch of our new Facades+ website, Facadesplus.com, your destination for everything building envelope. From the latest in news coverage to a directory of manufacturers and services to information for our upcoming events, this is the place to get your fill of Facades.

To our devoted supporters, Facadesplus.com will offer greater options for editorial coverage, placements, manufacturer profiles, and more, so do send us your projects, products, press releases, and whitepapers.

Visit us at Facadesplus.com on May 8 to experience the new Facadesplus.com.

Be sure to enter May 22nd, 2018, into your calendar for the second edition of our very popular TECH+ Forum and Expo, when The Architect's Newspaper returns to Met West. In just one day, you'll experience a rich showcase of the technology that is disrupting and pushing forward the AEC industry.

Has Facades+ struck a chord with you? There's more in store for 2018, including our next two-day conference in Los Angeles on October 25+26, as well as Facades+AM, our quick-take version of Facades+ held in cities across the U.S. We'll be in San Francisco on June 7th and Kansas City on July 19th.

We are eager to hear from you as to how we might improve the Facades+ experience. Talk to us. And please spread the word—help us to continue to grow the Facades+ dialogue and community.

Diana Darling
Conference Director



Diana Darling
The Architect's Newspaper
Publisher
Conference Director



Dionne Darling
The Architect's Newspaper
Associate Publisher



Susan Kramer
The Architect's Newspaper
Special Events Director

A MESSAGE FROM THE MAYOR OF NEW YORK CITY



Dear Friends:

It is a great pleasure to welcome everyone to the Facades+ Conference in New York City.

New York's iconic building projects and urban infrastructure upgrades continue to set new precedents for sustainability, resiliency, and innovation, and our city is proud to have ushered in a new era of urban design that is focused on creating a better future for the next generation. Design professionals of all kinds play an important role in these efforts, and there is no better place than our city to host the Facades+ Conference and celebrate the impact made by architects, engineers, developers, and industry leaders who continue to help fuel our progress. With a wide variety of workshops, presentations, exhibitions, and networking opportunities, Facades+ will offer attendees the chance to discover more about the latest developments, strategies, and innovations that are shaping the building design sector. I am proud to applaud all of the conference's dedicated organizers and supporters as we continue to work to build one city, where all can rise together.

On behalf of the city of New York, I offer my best wishes for a wonderful conference, continued success, and an enjoyable stay in our great city.

Bill de Blasio
Mayor



William Menking
The Architect's Newspaper
Editor-in-Chief
LA Co-Chair



Marty Wood
The Architect's Newspaper
Program Director



7:45–8:25	Check-in & Breakfast		METHODS+MATERIALS GALLERY	8 HSW CEUs
8:25–8:35	Welcome		Andrew Whalley Grimshaw NYC Co-Chair Diana Darling The Architect's Newspaper William Menking The Architect's Newspaper	
8:35–8:40	Diamond Presenting Partner's Welcome		Glenn Miner	
8:40–8:50	Opening Remarks		Kate Daly Closed Loop Partners	
8:50–9:45	OPENING KEYNOTE: Materializing Dreams <i>Q+A with Keynote Speaker</i>		Francine Houben Mecanoo <i>Moderator: William Menking The Architect's Newspaper</i>	
9:45–10:30	Hudson Yards Rising: New Projects for NYC Newest Neighborhood. <small>Sponsored by Ornamental Metal Institute of New York</small>		Frank Mahan Skidmore, Owings, & Merrill Peter Arbour Vidaris Neil Thelen Neil Thelen Architects <i>Moderator: William Menking The Architect's Newspaper</i>	
10:30–10:40	Methods and Materials Speaker		Travis Conrad	
10:40–11:00	Networking Break	<small>Sponsored by: W&W GLASS, LLC</small>	METHODS+MATERIALS GALLERY	
11:00–11:30	Frost Museum		Christian Hoenigschmid Grimshaw	
11:30–12:15	ETFE: Reaching the New Heights of Transparency		Alloy Kemp Thornton Tomasetti David Dennis Grimshaw Matthew Krissel Kieran-Timberlake <i>Moderator: Andrew Whalley Grimshaw NYC Co-Chair</i>	
12:15–12:25	Methods and Materials Speaker		Greg Galloway	
12:25–1:25	Complimentary Networking Lunch		METHODS+MATERIALS GALLERY	
1:25–1:35	Remarks		Diana Darling The Architect's Newspaper	
1:35–2:30	AFTERNOON KEYNOTE: Inventing with Glass <i>Q+A with Keynote Speakers</i>		Ian Ritchie Ian Ritchie Architects <i>Moderator: Andrew Whalley Grimshaw NYC Co-Chair</i>	
2:30–3:25	Re-evaluating Metrics: Thermal Performance of Building Enclosures and Future Climate Change		Yan Chu Adamson Associates Architects Nico Kienzl Atelier Ten Ken Kunkel NC STATE Elizabeth Tomlinson TKDA	
3:25–3:35	Methods and Materials Speaker		Grason Cook	
3:35–3:40	Remarks		Oliver Stepe	
3:40–4:00	Networking Break	<small>Sponsored by: W&W GLASS, LLC</small>	METHODS+MATERIALS GALLERY	
4:00–4:55	Performance Enclosures for Performance Venues: Current trends in Entertainment Venue Enclosure Design		Stephen Chu Ennead Matt Ducharme Populous Thilo Wilhemsen Gartner Erik Verboon Walter P Moore	
4:55–5:05	Closing Remarks		William Menking The Architect's Newspaper	
5:15–7:00	Cocktail Reception	<small>Sponsored by: WALTER P MOORE</small>	METHODS+MATERIALS GALLERY	
	Wednesday Night Kickoff Cocktails	<small>Sponsored by: FIRESTOP</small>	Hosted by: GRIMSHAW	<i>*Speakers subject to change</i>

OPENING KEYNOTE



FRANCINE HOUBEN
FOUNDING PARTNER
MECANOO

Houben's work ranges from theaters, museums, and libraries to neighborhoods, housing, and parks. Currently, she is working on the renovation of the New York Public Library. Houben has held professorships in the Netherlands and abroad, including Harvard University. In 2010, she received lifelong membership to the Akademie der Künste in Berlin. She holds honorary doctorates from Utrecht University and Université de Mons. In 2015, she received the prestigious Prins Bernhard Cultuurfonds for her entire oeuvre.

AFTERNOON KEYNOTE



IAN RITCHIE
FOUNDING PARTNER
IAN RITCHIE ARCHITECTS

Ritchie established his eponymous firm in London and co-founded the design-engineering firm Rice Francis Ritchie in Paris. His practice has designed landmarks throughout Europe, including the glass towers of Madrid's Reina Sofia Art Centre, the Leipzig Glass Hall, Spire of Dublin, Sainsbury Wellcome Centre for Neural Circuits and Behaviour at UCL, and the Royal Academy of Music Opera Theatre and Recital Hall. In 2000, Ritchie was awarded a CBE and the Académie d'Architecture Grand Silver Medal for Innovation. He was elected to the Royal Academy in 1998 and to Berlin's Akademie der Künste in 2013.

NYC CONFERENCE CO-CHAIR



ANDREW WHALLEY
DEPUTY CHAIRMAN
GRIMSHAW

Whalley has been an instrumental part of the practice since its earliest days, as well as Partner-in-Charge of diverse projects. His award-winning work includes the International Terminal at Waterloo, the Eden Project in Cornwall, and EMPAC in Troy, NY. Active, too, in academia, Whalley writes for numerous publications. He is a member of AIA and RIBA and a Fellow of the Royal Society of Arts.

PRESENTERS



PETER ARBOUR
ASSOCIATE PRINCIPAL
VIDARIS

With over 15 years' experience as a facade system designer and consultant to architects, Arbour focuses on the conception, detailing, and construction of custom-designed building facades. A seasoned manager of project teams composed of a vast spectrum of professionals, he has a wide-ranging knowledge of building materials and the procedures of fabrication, assembly, and construction of diverse building enclosure systems.



STEPHEN CHU
ASSOCIATE PARTNER
ENNEAD

Chu's award-winning work covers a range of typologies, including educational, cultural, and civic institutions. An Associate Professor at Pratt's Graduate School of Architecture, he has served as a studio critic, juror, and lecturer at numerous colleges of architecture. Chu received a BArch from UC Berkeley College of Environmental Design and attended the Urban Design program at the Istituto Universitario di Architettura di Venezia.



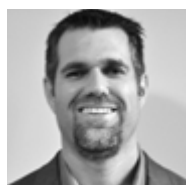
YAN CHU
ASSOCIATE
ADAMSON ASSOCIATES

As the enclosure specialist for Adamson, Chu provides technical leadership while establishing the office's standards on system design, detailing, and specification of enclosures across all projects. Previously, Yan was a facade consultant at Heintges & Associates, working on the new Whitney Museum of American Art, South Street Seaport Pier 17, and Vassar College Bridge Building.



TRAVIS CONRAD
ARCHITECTURAL CONSULTANT
NEOLITH

Conrad is the North American Architectural Consultant Representative where he assists the architectural community on Neolith products. He is an OAA accredited presenter for Rainscreen Education with a focus on ventilated facade products and systems. He worked as a designer for Cornerstone Architecture where he gained experience in rainscreen building science and project tendering.



GRASON COOK
NATIONAL SALES MANAGER
ALUICOIL NORTH AMERICA

Cook is the Commercial Director for Alucoil North America, a manufacturer of high-quality metal products. He has been active in the construction industry for the past 17 years, with an emphasis on facade products, including high-pressure laminates, fiber cements, aluminum composite panels, and aluminum honeycomb panels.

PRESENTED BY

THE ARCHITECTS NEWSPAPER

Vitro
 Architectural Glass

PPG Formerly PPG Glass

2018 CONFERENCE CHAIR

YKK AP Quality inspires



Find your comfort zone. On so many levels.

Establish a comfort zone with *Solarban*® glass by Vitro Architectural Glass (formerly PPG Flat Glass)—now under new ownership and driven by the same U.S.-based plants, people and products trusted by architects for years.

Within the *Solarban*® brand family of low-e glass coatings, you'll find a wide array of solar control performance and aesthetic options delivering unparalleled choices. Backed by 50 years of proven reliability and a formula for the future, you can find comfort in the *Solarban*® glass family.

Start your own stack of *Solarban*® samples at vitroglazings.com/solarban or **855-VTRO-GLS (887-6457)**.

©2017 Vitro Architectural Glass. All rights reserved. *Solarban*, *Starphire* and the *Starphire* logo are registered trademarks owned by Vitro. *Starphire Ultra-Clear* is a trademark owned by Vitro. The *PPG* logo is a registered trademark of PPG Industries Ohio, Inc.



SOLARBAN®
Solar Control Low-E Glass

Vitro®
Architectural Glass

PPG Formerly PPG Glass



KATE DALY
EXECUTIVE DIRECTOR
CLOSED LOOP PARTNERS

Daly is Executive Director of the Center for the Circular Economy at Closed Loop Partners. The Center, which launched in 2018, incubates innovative startups. Previously, she was Senior VP at the NYC Economic Development Corporation. Daly has also served as the Executive Director of the NYC Landmarks Preservation Commission. She has a Master's in Historic Preservation from the University of Pennsylvania.



DAVID DENNIS
ASSOCIATE PRINCIPAL
GRIMSHAW

Since joining Grimshaw in 2006, Dennis has played an instrumental role in the expansion of the practice in the visitor attraction, cultural, and hospitality sectors. He leads the firm in design for projects around the world, most recently Tomorrowland at Disneyland Shanghai. His design work has been published in various magazines and received prestigious accolades. Dennis has a MArch from The Melbourne University.



MATT DUCHARME
DESIGN DIRECTOR
POPULOUS

Holding degrees in structural engineering and architecture, Ducharme's multidisciplinary approach has produced diverse projects, from the master planning of innovation districts and mixed-use complexes to the design of stadiums, civic buildings, and towers. Ducharme oversaw the global team for Australia's first mixed-use tower, 447 Collins Street, Melbourne. Prior to his directorship in Australia, he served as Senior Designer for 111 West 57th Street.



GREG GALLOWAY
BRAND MANAGER
YKK-AP

Galloway is an experienced building products professional, skilled in all aspects of product development, marketing management, quality engineering / assurance and manufacturing excellence. He has a proven ability to take projects from concept assessment to timely product launch, providing full marketing collateral support. He consistently exhibits a strong commitment to understanding and supporting customers through the project lifecycle.



CHRISTIAN HOENIGSCHMID-GROSSICH
ASSOCIATE PRINCIPAL
GRIMSHAW

Since joining Grimshaw in 2010, Hoenigschmid-Grossich has taken lead roles on some of the firm's most notable projects in Europe and North America, including Zurich Airport's Airside Centre, Museo del Aereo in Monterrey, and the recently completed Frost Museum of Science in Miami.



ALLOY KEMP
SENIOR PROJECT ENGINEER
THORNTON TOMASETTI

As a licensed architect and trained engineer, Kemp has extensive experience in the design and engineering of ETFE and other facade systems. At Thornton Tomasetti, she has been integral to large- and small-scale ETFE projects and has developed best-practice guidelines for ETFE systems. Kemp has taught at Northwestern University, Illinois Institute of Technology, and The School of the Art Institute of Chicago.



NICO KIENZL
DIRECTOR
ATELIER TEN

Kienzl has over 20 years' experience in sustainability consulting with expertise in the application of advanced building analysis for facade optimization, daylight and shading analysis, and optimization of building systems. At Atelier Ten, he performs a significant role on residential, commercial, institutional, cultural, and masterplan projects in the U.S., Europe, and the Middle East.



MATTHEW KRISSEL
PARTNER
KIERANTIMBERLAKE

Krissel has 17-plus years' experience with cultural, educational, and government clients, and currently works on projects for New York University and Yale University. He also leads initiatives dedicated to digital innovation, visualization, and knowledge-sharing within the firm. Krissel has lectured at AIA Technology in Architectural Practice (TAP), AIA Committee on Design, Facades+, Harvard University, and the National Institute of Building Sciences.



DR. KENNETH KUNKEL
RESEARCH PROFESSOR
NORTH CAROLINA STATE UNIVERSITY

Kunkel is the Research Professor of North Carolina State University and Lead Scientist for Assessments with the Cooperative Institute for Climate and Satellites. He holds a PhD in meteorology from the University of Wisconsin-Madison. A lead author on the recently released "Climate Science Special Report," Kunkel has published over 150 scientific journal articles and book chapters.



FRANK MAHAN
ASSOCIATE DIRECTOR
SOM

Mahan has worked on a variety of commercial, historic landmark, adaptive reuse, and renovation projects across the U.S. On Manhattan's West Side, Mahan led the design team for 35 Hudson Yards, a 1,000-foot-tall mixed-use skyscraper destined to become a landmark within New York City's largest new development.

NEOLITH®

SINTERED STONE

NEOLITH + pureti
Self-Cleaning and Sustainable Facades

Ventilated Facade: IRON CORTEN and CHOCOLATE IHC Cladding System | San Leandro Tech Campus (USA) | Designed by RMV Architecture & Interiors



NEOLITH®: DESIGN, VERSATILITY, DURABILITY, SUSTAINABILITY.

Interior and exterior applications: Facades, Cladding, Countertops, Furniture, Flooring. Resistant to stains, scratches, chemicals, extreme temperatures and UV exposure. Light, 100% natural and recyclable. Maximum format, minimum thickness, different finishes. More than 50 selections available.



FM DISTRIBUTING: SF (Northern CA), NE, OR, WA, ID, AK & HI; GLOBAL GRANITE & MARBLE: MO, KY & KS; HG STONES: NY, NJ; LA NOVA TILE: TX (Houston); MARBLE & GRANITE: CT, MA; MARVA MARBLE: VA, MD, NC, DC, WV, PA, DE, SC; OLLIN STONE: Southern CA; OMICRON GRANITE: FL, AL, LA, MS & OH; PACIFIC SHORE STONES: AR, TX (Austin, San Antonio), TN (Memphis), OK; POMOGRANIT STONES: TX (Houston); STONE CENTER: GA; STONE DESIGN: IL, IN, IA, WI, MN & MI; THE STONE COLLECTION: TX (Dallas, Fort Worth), NM, CO, AZ, UT & MT.



GLENN MINER
DIRECTOR OF CONSTRUCTION
VITRO

Miner has over 37 years' experience with Vitro in automotive, aircraft, and architectural glass. Presently, he directs the strategy development and implementation for the commercial construction segment, managing new product development, business positioning, marketing communications, and channel access programs. Previously, he held positions in engineering, quality assurance, and marketing.



OLIVER STEPE
PRESIDENT
YKK-AP

Stepe oversees YKK AP America as a fully integrated fenestration systems producer in commercial facade systems and residential windows. Since 1992, Stepe has served in a variety of roles, including VP sales and operations and Senior VP leading strategic-growth initiatives. He is a two-time recipient of the most influential people in the glass and metal industry award by USGlass Magazine.



NEIL THELEN
PRINCIPAL
NEIL THELEN ARCHITECT

Thelen has over 15 years' experience in the design and execution of complex building projects globally and the strategic utilization of advanced digital tools for project delivery. Previous firms include Diller Scofidio + Renfro, Front Inc, and Gehry Technologies. He has also taught design, fabrication, BIM, parametric modeling, and drawing at Columbia University, the University of Michigan, and the University of Virginia.



ELIZABETH TOMLINSON
SENIOR ENGINEER
TKDA

Tomlinson's career in mechanical engineering focuses on high performance in commercial, educational, government, and health-care facilities. On regional and national levels, she works on research and public policy changes to address climate change adaptation. Tomlinson was recently elected to ASHRAE's Climate Change Position Document Committee and chairs the society's new handbook chapter, Climate Change.



ERIK VERBOON
MANAGING DIRECTOR
WALTER P MOORE

Trained in architecture and engineering, Verboon is the Co-Founder of Walter P Moore's New York office. There, he brings global experience to the design of complex and high-performance building envelopes, including high-performance double-skin facades, geometrically-complex composite facades, and custom unitized enclosures for new buildings and existing building retrofits. His portfolio encompasses both national and international work, particularly in the NY market.



THILO WILHELMSSEN
TENDER LEADER
JOSEF GARTNER

Wilhelmsen provides technical assistance to architecture and engineering firms in the U.S. and Canada, focusing on innovative building envelope solutions, including custom steel and glass and high-performance unitized wall systems. Previously, he devoted 15-plus years to the construction industry, running his own firm, as well as working in the facade and glazing sectors.

CE | STRONG™

Couldn't be easier.
 AIA CEUs at your fingertips
 with the CE | Strong app.
www.cestrong.com



CE | STRONG™
LIVE WEBINARS
 Now available!
 For details, contact:
ddarling@archpaper.com





POHL

Competence from Tradition

since 1856

POHL FACADES: SYSTEM. VARIETY. AESTHETICS.

Innovative construction and design solutions

Headquarter Christian Pohl GmbH · Robert-Bosch-Str. 6 · 50769 Cologne Germany

Phone: +49 221 70911-0 · Fax: +49 221 70891-23 · info@pohl-facades.com

Pohl Inc of America 6161 Double Eagle Circle · West Valley City, UT 84118 USA

Phone: +1 801-988-1305 · Fax: +1 801-988-1310 · info@pohl-facades.com

POHL-Group of Companies

www.pohl-facades.com



Presented by **THE ARCHITECT'S NEWSPAPER**

THE PREMIER CONFERENCE ON HIGH-PERFORMANCE BUILDING ENCLOSURES

2018 LINE-UP

SAN FRANCISCO
(AM) JUN 7

MIAMI
(AM) OCT 4

BOSTON
(1-DAY) NOV 9

KANSAS CITY
(AM) JUL 19

LOS ANGELES
(2-DAY) OCT 25+26

SEATTLE
(AM) DEC 7

CHICAGO
(1-DAY) SEP 21

facadesplus.com

ABOUT FACADES+

The Facades+ Conference series, presented to you by The Architect's Newspaper is a robust dialogue encompassing all things building skin. This series of conferences and forums is currently in its sixth year and has taken place in cities across the nation. Stay up-to-date with upcoming Facades+ conferences and our weekly newsletter by signing up at facadesplus.com.

ABOUT THE ARCHITECT'S NEWSPAPER

The Architect's Newspaper is a media company which serves up news and inside reports to a niche community of architects, designers, engineers, landscape architects, lighting designers, interior designers, academics, developers, contractors, and others interested in the built urban environment. A|N delivers quality news and cultural reporting through print, including its new A|N Interior magazine, web, blog, newsletters, and social media. A|N is recognized for bringing together the top echelon of AEC industry leaders in its series of Facades+ and new TECH+ conferences. If you care about architecture and design, join our community and get in the know. Visit archpaper.com for more information.

TECH+

DESIGN • BUILD • TRANSFORM

NYC

May 22



BE PART OF THE AEC EVOLUTION

TECH+ presents a full day of Talks and Demos on 2 stages along with an Expo of cutting-edge products that range from virtual reality-aided design tools, mobile apps, sensors, and software platforms to rapid prototyping and fabrication. Come see the latest in smart building systems, advanced materials, and innovative products that help create the spaces of the future.

TECHPLUSEXPO.COM

Part of **NYC DESIGN**

@techplusexpo #techplusexpo

THE
**ARCHITECTS
NEWSPAPER**

FRIDAY WORKSHOPS



Choose *one* morning and *one* afternoon workshop. *Registration required, subject to availability.*

MORNING SESSION HALF

A **Curtain Wall Systems: from Sketch to Completion 101 (Part 1 of 2)**
Greg Galloway & Bart Harrington | YKK-AP

B **Advanced Detailing for High Performance Envelopes**
Chris O'Hara | Studio NYL
Brad Prestbo | Sasaki
Stan Su | Morphosis

C **Disrupting the Status Quo: Discover How Bold Thinkers Design, Develop, and Deliver Tomorrow's Complex Facades**
Anthony Birchler | Zahner
Heath May, Jon Bailey, & James Warton | HKS

D **Cold-Bent Glass: Trouble with the Curve**
Morgan Reynolds, James Richardson, & Viktoria Henriksson | Thornton Tomasetti

E **Mind the Gap: Achieving Enclosure Innovation Through Integrated Design**
Silvia Prandelli | Walter P Moore
Kevin Schorn | Renzo Piano
Marc Zimmer | Frener & Reifer

F **Alethic Forms: Hybridized Expressions in Performance-Driven Skyscrapers**
Neil Katz, Daniel Inocente, Cong Ye, Max Haney, & Changjiang Zhou | SOM

G **Innovations in Manufacturing (Part 1 of 2):**

- Understanding Perimeter Fire Barrier Systems in the Modern Age: Maintaining Integrity in Today's Complex Designs**
Eric La Croix | STI FIRESTOP
- Ultra-Thin Prestressed Precast Technology**
Joe Fattore | HIGH CONCRETE GROUP
- Understanding Low-E Coatings**
Steve Cohen | nitro Architectural Glass

AFTERNOON SESSION HALF

H **Stick Built Curtain Walls Interactive 102 (Part 2 of 2)**
Greg Galloway & Bart Harrington | YKK-AP

I **The Future of ETFE Skins: Innovation in Design, Engineering, Materials and Fabrication**
Sanjeev Tankha, Jeff Thompson, & Kais Al-Rawi | Walter P Moore
Alexander Jafari | Vector Foiltec
Kevin Daly | Kevin Daly Architects

J **Combining Performance and Design in Custom Facade Systems**
Scott Bondi & Sean M O'Brien | SGH
Ekta Desai | Ten Arquitectos

K **Domino Site A: Big Area Additive Manufacturing (BAAM) & When and Why to Use It**
Pam Campbell | COOKFOX
Hale Everets | Two Trees
Diana Hun | Oak Ridge National Laboratory
Mo Wright & Doug Floury | Gate Precast

L **Complex Facades Made Simple, and Without Losing Their Mojo**
Benson Bright Gillespie & Molly Forr | Surface Design Group

M **Innovations in Manufacturing (Part 2 of 2):**

- Sintered Compact Surfaces for Building Facades**
Travis Conrad | NEOLITH
- When to use Storefront versus Curtain Wall**
Bob Barbone | KAWNEER
- Daylighting Challenges: Advances in Smart-Tinting Glass Technologies**
Jeffery Glick | KINESTRAL

SCHEDULE

8:00	Check-in + Coffee
9:00	Morning Workshops begin promptly
10:45	Networking + Refreshment Break (15 min)
12:30	Complimentary Networking Lunch
1:15	Afternoon Workshops begin
3:00	Networking & Refreshment Break (15 min)
4:45	Workshops end



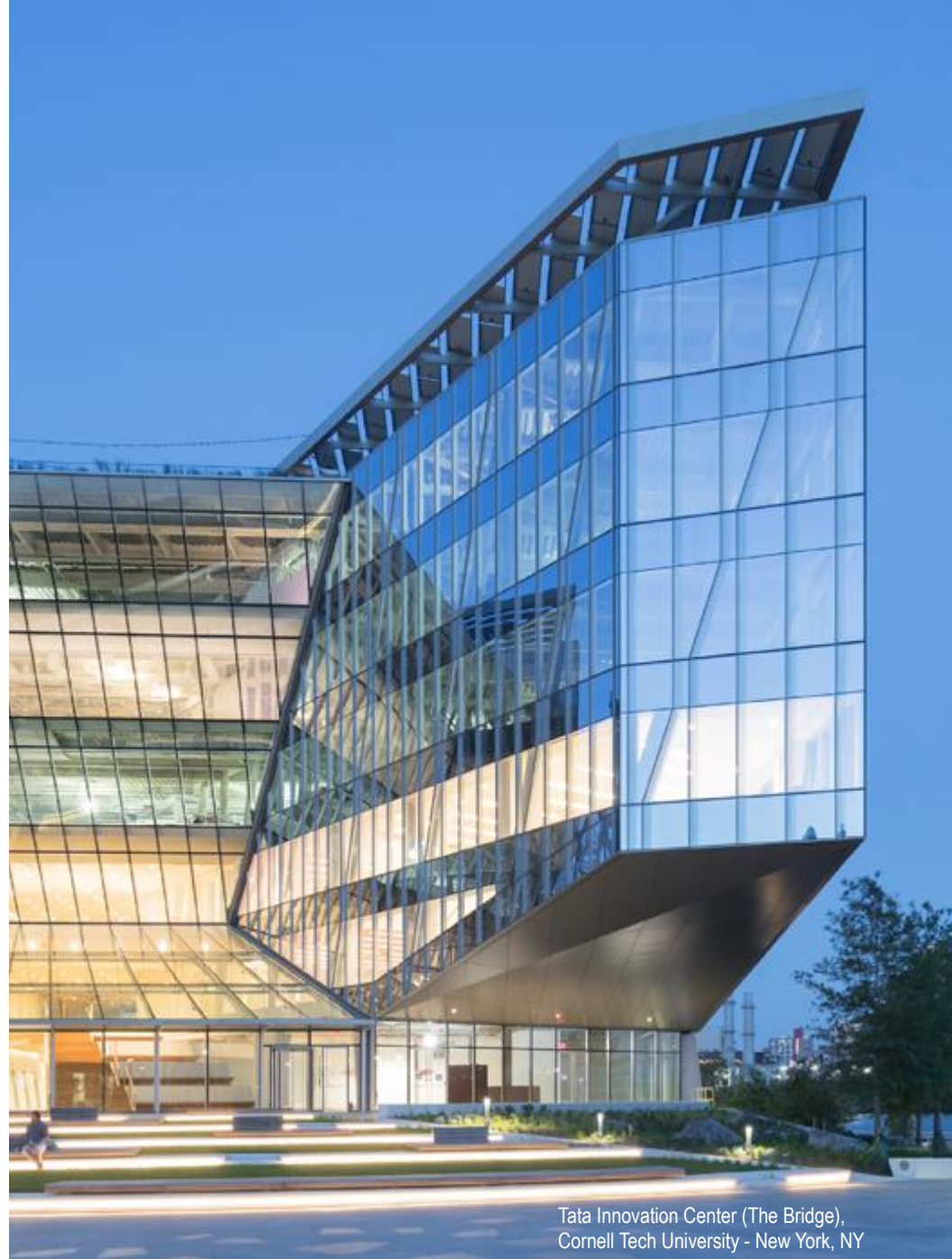
1455 Broadway Tower - Portland, OR



620 South Tryon - Charlotte, NC



Cummins Distribution HQ - Indianapolis, IN



Tata Innovation Center (The Bridge),
Cornell Tech University - New York, NY

ENVIRO | FACADES®

innovative | high-performance | facades

800.878.1861
www.erieap.com
sales@erieap.com

ERIE®
ARCHITECTURAL PRODUCTS

INSTRUCTORS



KAIS AL-RAWI

ASSOCIATE

WALTER P MOORE

Al-Rawi works at the intersection of architecture and engineering. He is a specialist in generative and computational design methods and has directed and lectured at the AA Summer Visiting School in Jordan. Al-Rawi also engages in design-research projects, where his most recent co-designed installation at the A+D Museum received an AIA Merit Design Award.



JON BAILEY

ASSOCIATE AND DESIGNER

HKS

Bailey is a designer and researcher at HKS Laboratory for Intensive Exploration (HKS LINE). In 2007 he founded Archimorph, an online architectural research project about technological and biological integration in design. He is a graduate of the University of Michigan, where he studied advanced modeling techniques, robotic fabrication, parametric and algorithmic modeling, architectural theory, and data-driven performance modeling in architectural design.



ANTHONY BIRCHLER

VICE PRESIDENT ENGINEERING/SALES

A. ZAHNER COMPANY

Birchler leads Zahner's design-engineering team. Since 1998, he has been responsible for many of the patented systems used to complete bold architecture all over the world. He shares responsibility for developing two out of five patents held by Zahner, best known for the ongoing work that he put into developing the ZEPPS® Technology, the firm's dual-curvature building system.



SCOTT N BONDI

ASSOCIATE PRINCIPAL

SGH

Bondi has extensive experience in building enclosure design, specializing in building science and numerical analysis. He consults on new construction and historic renovation, applying his expertise in curtain wall and custom glazing systems. Bondi is also experienced in forensic engineering services and expert witness support for building enclosure and mechanical systems. He is an adjunct professor at The Cooper Union.



PAM CAMPBELL

PARTNER

COOKFOX ARCHITECTS

Prior to joining COOKFOX in 2003, Campbell served on the design team for One Bryant Park, the first LEED Platinum skyscraper. Additional work includes Live Work Home, a prototype LEED Platinum home; 150 Charles Street, with its groundbreaking integration of garden spaces; and Neeson Cripps Academy, Phnom Penh, serving poverty-stricken

children. Currently, Campbell is working on an academic building for the Marymount School.



STEVE COHEN

NATIONAL ARCHITECTURAL MANAGER

VITRO ARCHITECTURAL GLASS

Cohen joined Vitro (formerly PPG Industries) in 2015 as the National Architectural Manager, Northeast Region, offering product support to architects and glazing contractors from New York City to the Canadian border. Previously he spent 20 years in sales and product management at Schott North America. Cohen earned a BS in Architecture from Penn State.



KEVIN DALY

PRINCIPAL

KEVIN DALY ARCHITECTS

Daly pursues an architecture that delves into the paradoxes of the urban condition and the consequences of intervention. Projects range from public schools, custom residences, and university buildings to affordable housing. A member of the faculty at UCLA, he has juried or lectured at institutions internationally, including Stanford University, Cornell University, Rice University, SCI arc, the Architectural League of New York, the University of Texas at Austin, and RISD.



EKTA DESAI

SENIOR PROJECT DESIGNER

TEN ARQUITECTOS

Desai is a Senior Architect at TEN Arquitectos, in Mexico City. The firm's North American work includes Mercedes House and the new New York Public Library on 53rd Street. Desai earned a MArch from the Sam Fox School of Design at Washington University in St. Louis, where she was awarded the AIA Henry Adams Gold Medal in Design.



HALE EVERETS

ARCHITECT

TWO TREES

Everets is a real estate developer and registered architect who has led design and construction for over \$1 billion in development including projects at the Domino Sugar Factory, Mercedes House, and Wythe Hotel. He currently oversees design and construction for more than one million square feet in downtown Brooklyn and its waterfront. Previously, Everets was a Senior Associate with Taller Enrique Norten.

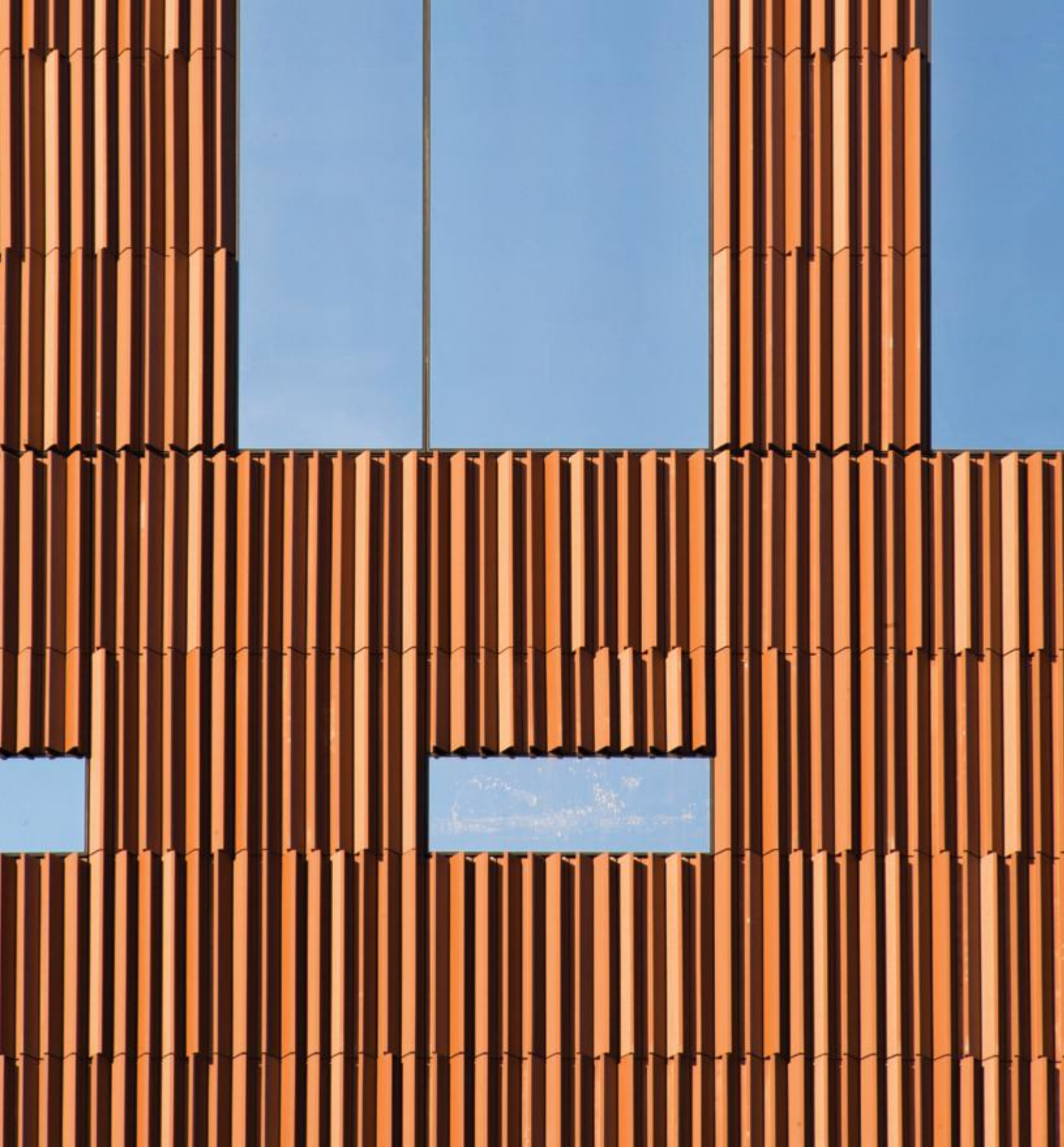


JOSEPH S FATTORE

ARCHITECTURAL SALES SPECIALIST

HIGH CONCRETE GROUP, LLC

Fattore has 35 years' experience in architecture, engineering, and construction throughout the Mid-Atlantic and Northeast. A licensed architect since 1995, he has worked with a diverse list of firms on buildings of all types. For the past 12 years, Fattore has specialized in technical support within the building envelope industry.



University of Michigan, Biological Science Building (construction photo) | Ann Arbor, Michigan | Ennead Architects + SMITHGROUPJJR | Photo: Sinziana Velicescu

Design your Passion. Build with Ours.

Taking façade design to a whole new level with Shildan's highly engineered terracotta rainscreen and sunscreen products and systems.

www.shildan.com





DOUG FLORY
PRECAST SALES AND MARKETING
GATE PRECAST CAPITOL REGION

Flory brings 37 years' experience to the precast concrete industry, overseeing estimating, proposal submission, contract negotiations, and project management. He works with contractors, architects, and owners on various design-build/design-assist projects such as university, military, office, hospitality, and museum projects. From 1989 to 1992, he was Chair of NPCA Committee of Transportation Products. He holds a BS from Virginia Tech.



MOLLY FORR
PARTNER
SURFACE DESIGN GROUP

Forr has dedicated her career to developing elegant design solutions for technically demanding projects. At SURFACE she has overseen high-rise projects, developed tools for analyzing thermal performance of exterior walls, and researched innovative and green technologies. Previously she worked in design and detailing at Gehry Partners. A Registered Architect and a LEED Accredited Professional, Forr holds a BA and MArch from MIT.



GREG GALLOWAY
BRAND MANAGER
YKK-AP

See Symposium presenters for bio.



BENSON BRIGHT GILLESPIE
PARTNER
SURFACE DESIGN GROUP

Gillespie has worked as both a technical facade designer and subsequently a facade consultant, with a focus on the design, fabrication, and use of parametric software in the development of custom exterior wall systems and specialty structures. He is a Registered Architect, a LEED Accredited Professional, and holds a MArch from Rice University.



JEFFERY GLICK
VP SALES - NORTH AMERICA
KINESTRAL TECHNOLOGIES

Glick has been championing daylighting solutions for nearly two decades. He regularly speaks on why technologies that maximize daylight in homes and workspaces matter. Before joining Kinestral Technologies to build and lead the Halio sales team in North America, Glick was an associate vice president at MechoSystems, where he worked on over 60 automated window management projects.



MAX HANEY
DESIGNER
SOM

With a background in computational design, visualization, and VR, Haney has worked on the design of a range of projects at SOM, including master plans, office and residential towers, institutional buildings, and interior spaces. Experienced in methods of distilling geometry to its fundamental drivers, Haney has a passion for scripting and programming to build custom tools for solving complex design problems.



BART HARRINGTON
FIELD TECHNICAL SERVICES MANAGER
YKK-AP

Harrington has 30 years' experience with the commercial glazing industry in sales, training, product management, and field technical service. He holds a BBA in marketing and economics from Georgia State University. While attending college, Harrington worked as a fabricator for a large commercial glazing contractor in Atlanta.



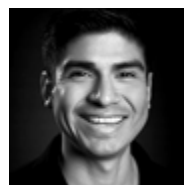
VIKTORIA HENRIKSSON
STRUCTURAL ENG & COMPUTATIONAL DESIGNER
THORNTON TOMASETTI

Henriksson is a Facade Engineer at Thornton Tomasetti, New York. With a double master's degree in Architecture and Structural Engineering from Chalmers University of Technology in Sweden, Henriksson has developed a special interest in optimization and modelling of complex building geometries.



DIANA HUN
BUILDING ENVELOPE RESEARCH MANAGER
OAK RIDGE NATIONAL LABRATORY

Hun leads interdisciplinary teams developing the next generation of precast insulated panels, primerless self-healing sealants, and polymeric vacuum insulation spheres. Other research areas include improving envelope airtightness while minimizing risks due to potential building material deterioration and indoor air quality. Hun has a PhD in civil engineering from the University of Texas at Austin with a grant from the National Science Foundation.



DANIEL INOCENTE
SENIOR ARCHITECTURAL DESIGNER
SOM

Charged with leading computational design efforts at SOM, Inocente's work revolves around developing design methodologies that leverage computational techniques for performance-driven design, enclosure systems, discrete geometrical optimization, and interdisciplinary research objectives. He currently focuses on large-scale projects in Asia, the UAE, and research work with the European Space Agency. Previous experience includes Gehry Partners, NASA, and Gehry Technologies.

larcore[®] A2

A STRONG FAÇADE FOR YOUR BUILDING

larcore[®] A2 is an extremely rigid and resistant aluminum honeycomb panel available in jumbo sizes up to 6.5" (2m) width by 45" (14m) length. An advanced material for top quality façades.

BBVA Bank Headquarters, Madrid
by Herzog & de Meuron Architects
larcore[®] A2 Stainless Steel



ALEXANDER JAFARI
DIRECTOR OF BUSINESS DEVELOPMENT
VECTOR FOILTEC

Jafari focuses on growing the U.S. ETFE market. Projects range from retail skylights to building envelopes for federal and stadium projects. His engineering background plays an important part in the success of the ETFE projects, facilitating collaboration with architects and designers. He was part of the team that helped design and complete the U.S. Bank Stadium, the largest ETFE project in the U.S.



NEIL KATZ
ASSOCIATE
SOM

Katz uses a “computational design” approach to develop simple and complex geometry to analyze and address environmental and sustainability goals. “Computational design,” including algorithmic and parametric design as well as building information modeling (BIM), is a way of thinking about design and using and developing design tools. Katz has taught and lectured at various schools and conferences.



ERIC LACROIX
DIRECTOR OF STRATEGIC ACCOUNTS
STI FIRESTOP

Recognized for his firestop expertise, Lacroix has over 20 years’ experience on complex high-profile projects around the world. He works closely with inspectors, glazing contractors, and curtain wall consultants during the design, fabrication, construction, and installation of curtain wall projects. Previously, Lacroix was the STI Firestop Regional Manager for the Southeastern U.S., Latin America, the Caribbean, South America, and Mexico.



HEATH MAY
DIRECTOR
HKS LINE

May is the Director for HKS Laboratory for Intensive Exploration (HKS LINE). LINE functions as a research-based design team, with an emphasis on the application of research. Having studied biology before turning to architecture, May seeks opportunities to explore and test ideas in the experimental setting of architectural practice. In 2013, he was named a recipient of Building Design + Construction’s 40 under 40.



SEAN O'BRIEN
PRINCIPAL
SGH

O'Brien heads the Building Technology group, specializing in building science and building envelope performance. He has published papers on moisture migration in masonry wall systems and condensation resistance of windows and curtain walls. He has a BA and MA in mechanical engineering from Cornell University, is a licensed professional

engineer in 17 states, a member of ASHRAE, AIANY, and co-chair of New York City BEC.



CHRIS O'HARA
FOUNDING PRINCIPAL |
STUDIO-NYL

O'Hara serves as Facade Director for the Skins Group, a division of Studio NYL, which provides full-service facade design specializing in thermal modeling, moisture/condensation analysis, and in-depth detailing. Recognized for its skins work with cutting-edge glass and glazing, the team also specializes in digitally fabricated metal skins, GFRC, reinforced polymers, stone, ultra-high performance concrete, terracotta, and traditional precast.



SILVIA PRANDELLI
ENCLOSURE TECHNICAL DIRECTOR
WALTER P MOORE

In the Los Angeles office, Prandelli specializes in complex geometry skins and the research of alternative materials for enhanced performance. Project experience ranges from residential, high-rise, and commercial developments to cultural, civic, and public-use projects in North America, the United Kingdom, Europe, the Middle East, and the Far East. She holds a Master’s in building engineering from Politecnico di Milano.



BRAD PRESTBO
SENIOR ASSOCIATE
SASAKI

Prestbo brings 19-plus years’ experience and technical skill in design and detailing to promote better practices in architecture. He cofounded BSA’s MakeTANK and is involved in the Construction Specifier’s Institute. He frequently participates as a design critic at colleges and universities, and lectures on detailing and on incorporating maker culture into the design process.



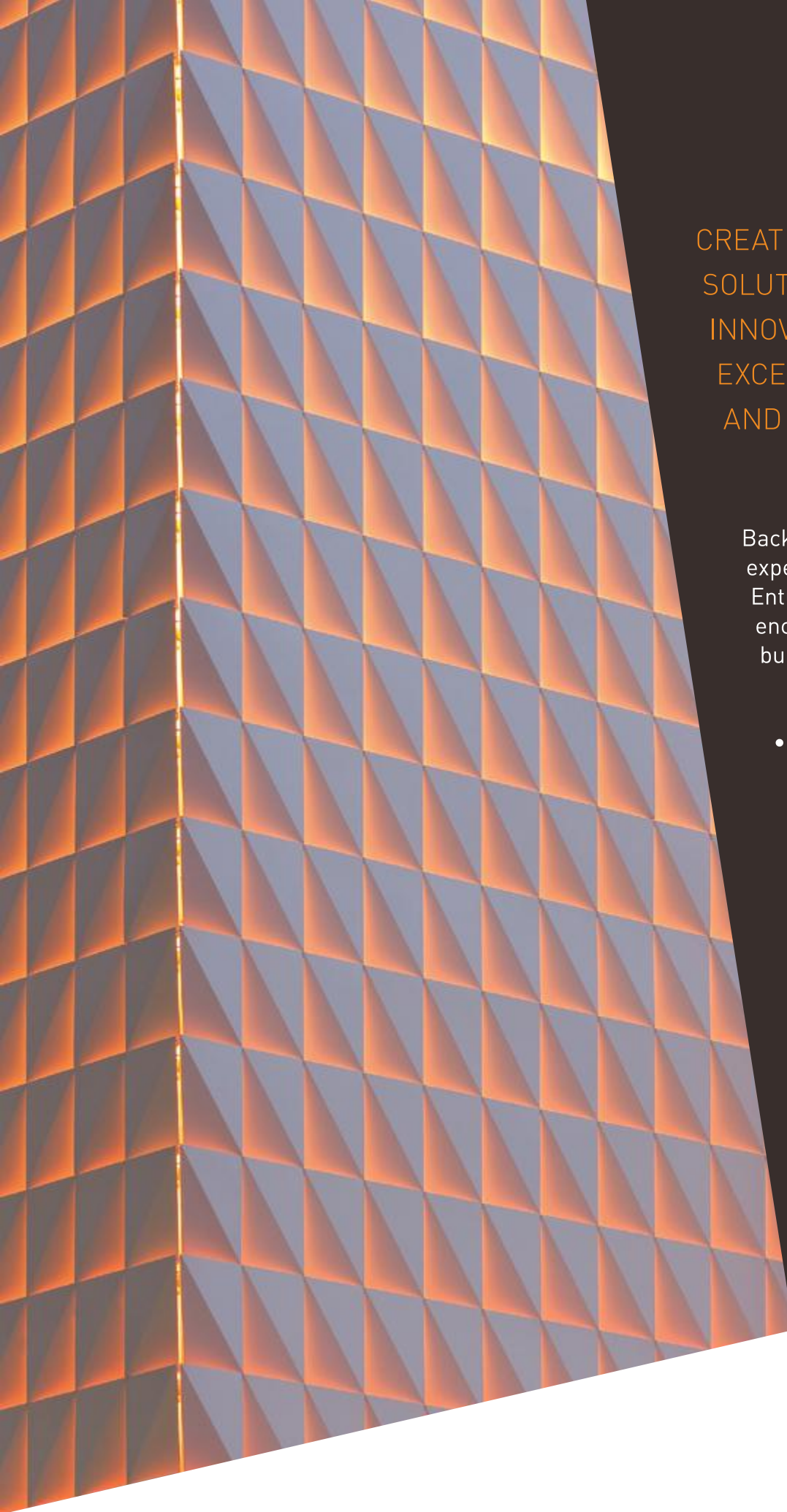
MORGAN REYNOLDS
PROJECT DIRECTOR
THORNTON TOMASETTI

Joining the firm in 2017, Reynolds provides experience in facade design, engineering, consulting, and project management for projects in the U.S. and Asia. He has also worked extensively in other aspects of facade engineering, including geometric rationalization, parametric design, thermal modeling, and digital fabrication. Reynolds is a member of AIA New York.



JAMES RICHARDSON
PROJECT MANAGER
THORNTON TOMASETTI

Richardson’s expertise comprises computational methods, parametric design, cost optimization, finite element analysis, and statistical analysis.



CREATING BUILDING ENVELOPE
SOLUTIONS THAT DELIVER
INNOVATIVE DESIGN,
EXCEPTIONAL PERFORMANCE,
AND DURABILITY.

Backed by decades of international experience across multiple sectors, Entuitive specializes in the complete enclosure of new and existing buildings. Services include:

- Building envelope systems for new buildings through design and construction
- Forensic analysis and restoration of existing building envelope systems
- Whole building envelope expertise; Cladding, glazing, roofing, and waterproofing
- Energy efficient and ultra-low energy buildings (including Passive House)

ENTUITIVE

SIMPLIFYING THE COMPLEX

www.entuitive.com

At Thornton Tomasetti he is responsible for building skin consulting and engineering, material selection, detail development, and facade structural system design. Richardson has written extensively about shell structures and topology optimization. He has a PhD in engineering science from the Université Libre de Bruxelles, Belgium.



KEVIN SCHORN

ASSOCIATE

RPBW

Schorn's work at RPBW ranges from commercial projects to museums, including serving as Project Lead on the new Whitney Museum of American Art. Schorn has lectured at the Yale School of Architecture and sat on the 2018 jury for the AIA COTE Top Ten Awards. He holds professional licenses in both structural engineering and architecture and a MArch from the University of Toronto.



STAN SU

DIRECTOR OF ENCLOSURE DESIGN

MORPHOSIS

Su serves as the office-wide lead on facade technology and fabrication. Experience includes working on both architectural design teams and facades-specific consultant teams. His guidance ensures that quality is upheld throughout the virtual design and construction processes.



SANJEEV TANKHA

DIRECTOR

WALTER P MOORE

Tankha leads the enclosure engineering practice. His expertise lies in developing elegant facade design solutions that balance structure, sustainability, and comfort. His experience covers aviation, sports, civic, commercial, transportation, and hospitality. Tankha is a Registered Architect in California as well as a LEED accredited professional.

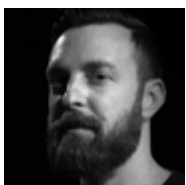


JEFF THOMPSON

SENIOR ASSOCIATE

WALTER P MOORE

Thompson works in the field of structural engineering and specialty structures design both in North America and worldwide. His focus is on project design involving innovative material use and complex geometry, in close coordination with architects and clients.



JAMES WARTON

ASSOCIATE

HKS LINE

Warton maintains an interest in cutting-edge manufacturing processes with a concentration in high-resolution additive processes. He currently focuses

on highly articulated metal structures and direct-to-fabrication methodologies. His role at HKS LINE demonstrates proactive engagement with practice leading to implementation of additively manufactured building-scale assemblies. He holds a MArch from the Architectural Associations' Design Research Laboratory and is pursuing a PhD in SMU's Mechanical Engineering Department.



MO WRIGHT

GATE PRECAST

MARKETING DIRECTOR

Wright has worked in the precast industry for 18 years, including precast sales and marketing, estimating, and project management. As marketing director, he runs an outreach program dedicated to the advancement of architectural precast as well as education. He has also been involved in several design-assist collaborations for large public and private projects, including universities, stadiums, museums, offices, and arenas.



CONG YE

ARCHITECTURAL DESIGNER

SOM

As a member of SOM's Digital Design Group, Ye explores aesthetics with algorithmic expressions, and solves planning and programming problems through computational techniques and optimization of complex geometries for building enclosures. Ye holds BArch and Bachelor of Engineering degrees from Wuhan University, China, and earned his MArch degree from the University of Pennsylvania.



CHANGJIAN ZHOU

SENIOR STRUCTURAL ENGINEER

SOM

Zhou develops the structural design for individual projects in coordination with the architectural and building service teams to incorporate the structural engineering design concepts within project requirements. His experience ranges from transportation infrastructure to high-rise commercial buildings, including Hangzhou Jindi Tower, 35 Hudson Yards, and the All Aboard Florida Miami Train Station.



MARC ZIMMER

PRESIDENT

FRENER & REIFER AMERICA, INC.

Zimmer is responsible for business development and operations. Utilizing a background combining structural and earthquake engineering with business, he oversees the execution of landmark facade projects across North America, focusing on structural glass applications, unitized facades, and filigree steel-glass constructions. He has lectured at Harvard Graduate School of Design and other leading universities and conferences.

**Supporting
facade designers
in creating
the next generation
of building enclosures
since 1972**



Ornamental Metal Institute of New York

www.ominy.org



gkdmetalfabrics.com

Elemento Building, Bogotá, Colombia
Bernal Arquitectos



WOVEN TO AWAKEN THE SENSES

Spark the heart, catch the eye, inspire the soul. More than facades, GKD Metal Fabrics weaves aesthetic and purpose into the most essential architectural elements. Feel the possibilities, **order a sample kit for your firm's library today.** Call 1-800-453-8616.



GKD SAMPLE KIT

FACADES • SAFETY & SECURITY • CEILING SYSTEMS • ACOUSTIC TILES • MEDIAMESH



LEARN ABOUT THE NEWEST BUILDING ENVELOPE COMPONENTS IN THE METHODS+MATERIALS GALLERY.

PRESENTED BY

THE ARCHITECTS
NEWSPAPER



2018 CONFERENCE CHAIR



GOLD SPONSORS



SILVER EXHIBITING SPONSORS



BRONZE SUPPORTING SPONSORS



INDUSTRY PARTNERS



Take the LEED. Choose framing first.

Take the LEED by considering your framing needs first in the design process. Buildings where framing is considered first have been proven to perform more efficiently and at a fraction of the cost compared to projects that take a glass-first approach. Spanning everything from entrances and storefronts to curtain walls and balcony doors, the YKK AP enerGfacade® line is ecologically conscious and economically sensible. When performance matters, the choice is obvious. The YKK AP enerGfacade® line is the perfect solution for the entire building envelope.

Visit ykkap.com/enerGfacade
for more information



ykkap.com

